

# Sailing Instructions BBC Big Boat Challenge DH/IRC Kerteminde Sejlklub / Kerteminde - Denmark 26<sup>th</sup> – 27<sup>th</sup> May 2012

## SI , SAILING INSTRUCTIONS

### 1 RULES

- 1.1 The regatta will be governed by the rules as defined in The Racing Rules of Sailing RRS. The applying prescriptions of the Scandinavian Sailing Association and the Danish Sailing Association has been be incorporated into the sailing instructions.
- 1.2 The Rules RRS are changed as follows:
- RRS 31 changed. SI 9.4
  - RRS 35, A4 og A5 changed. SI 14.1
  - RRS 44.1 and 44.2 changed. SI 13.1, SI 13.2
  - RRS 60.1(a) changed. SI 8.3 and SI 15.5
  - RRS 61.1(b) changed. SI 15.4
  - RRS 62.1(a) changed. SI 8.2, SI 8.3 and SI 14.2
  - RRS 61.3 and 62.2 changed. SI 15.2
  - RRS 62.2 changed. SI 15.7
  - RRS 63.1 is changed SI 13.3
  - RRS 63.3(a) is changed. SI 16.5
  - RRS 66 changed. SI 15.6
  - RRS A4 changed. SI 10.3
  - RRS Part 5 Section B. SI 16.1

If there is a conflict between languages the English text will take precedence.

- 1.3 Danish Handicap DH-2012 rules shall apply for boat using DH. IRC-2012 shall apply for boats using IRC rating. IRC 22.4 shall not apply. There will be no limitations on crew number or weight.
- 1.4 Advertising  
ISAF Regulation 20 - Advertising Code will apply.  
On the racecommittees request all boats will be required to display the following:
- Bow numbers.
  - Event and sponsor stickers on both sides of the bow (within 20%).
  - Event and sponsor flag permanently hoisted on the backstay.
  - Class identification flag permanently hoisted on the backstay.
    - BBC-class-1 shall display a white logo-flag in backstay
    - BBC-class-2 shall display a blue logo-flag in backstay

If Trac-Trac tracking device handed out to competitors by the race committee, shall be mounted and used according to instructions given by the race committee.

- 1.5 The second sentence of RRS 49.2 is changed to read: "On boats equipped with upper and lower lifelines of wire *or rope*, a competitor sitting on the deck facing outboard with his waist inside the lower lifeline may have the upper part of his body outside the upper lifelines."

- 1.6 All boats shall carry an operating VHF radio.
- 1.7 The Danish Big Boat Series prescriptions will apply for boats who has confirmed they will participate in the Danish Big Boat Serie.

**2 NOTICES TO COMPETITORS**

Official notices and addenda to these sailing instructions will be posted on the official notice board adjacent to Race office.

Copy of the notice board can be publish at the event web-site [www.bigboat.dk](http://www.bigboat.dk) but will not be the official notice.

- 2.1 Any questions concerning these sailing instructions, scoring, or any other racing issues shall be submitted in writing to Race Office. Forms to submit inquiries are available there. All written inquiries and responses will be posted on the official notice board.

**3 CHANGES TO SAILING INSTRUCTIONS**

Any change to the sailing instructions will be posted before 08.00 hrs on the day it will take effect, except that any change to the schedule of races will be posted by 18.00 hrs on the day before it will take effect.

**4 SIGNALS MADE ASHORE**

- 4.1 Signals made ashore will be displayed from the flagpole at the Race Office.
- 4.2 When flag AP is displayed ashore, '1 minute' is replaced with 'not less than 60 minutes' in race signal AP.

**5 SCHEDULE of races**

5.1	Day	Number of Races	BBC-class	First Warning signal
	Saturday 26. may	3	all	09.55 for BBC-class-1, BBC-class-2 warning signal can be at the BBC-class-1 start signal
	Sunday 27. may	2	all	09.55 for BBC-class-1, BBC-class-2 warning signal can be at the BBC-class-1 start signal

Warning signal for following races for the BBC-classes will be given as soon as reasonable possible after the finishing of the last boat in the same BBC-class.

The race committee will attempt to broadcast its intentions for next race over the designated VHF channel.

- 5.2 The race committee will broadcast its intent to the days races for all classes on the appropriate VHF Channels at 0800 and again at 0900.
- 5.3 No warning signal will be given later than 14.00 on the last day of the regatta. This timelimit can be changed by race committee until 18.00 the day before.

**6 CLASS FLAG**

Class-flag is pennant 1 for BBC-class-1 and pennant 2 for BBC-class-2.  
The BBC-classes and classification of each competitor is noted in the competitor list.

**7 RACING AREAS**

The Race Area Diagram shows the location of the racing area.  
It is situated east of Kerteminde Bay in the area between Stavrehoved and Risinge.  
Changes in actual location of the racing area will not be grounds for redress.

Sailing to and from the sailing area shall be done in the east-west route directly between Kerteminde Harbour buoys and the YB at Møllegrunden.

Pay attention to other sailing areas with reference to RRS 23.1.

## **8 THE COURSES**

- 8.1 The attached course diagram show the courses, including the approximate angles between legs, the order in which marks are to be passed, and the side on which each mark is to be left.
- 8.2 No later than the warning signal the race committee signal boat can display the approximate compass bearing from the boat to the first mark.  
The race committee will attempt to broadcast the courses on the designated VHF channel prior to the warning signal for the first class.  
Failure to display or announce the compass bearing will not be grounds to redress. This changes rule 62.1(a).
- 8.3 No later than the warning signal the race committee signal boat will display a letter corresponding to the DH specified TAUD windindex to be used for calculating DH results:  
L : Wind "Light", TAUDL will be used  
M : Wind "Medium", TAUDM will be used  
H : Wind "Heavy", TAUDH will be used

The race committees decision will not be ground for redress by a boat after RRS 60.1 (b) and 62.1 (a).

## **9 MARKS**

- 9.1 Mark 1 and 1a will be red inflated buoys.  
Mark 2 and 2a will be yellow inflated buoys.  
Mark 3s and 3p will be orange inflated buoys.
- 9.2 New marks, as provided in instruction 11.1, will be staffbuoy or boat with signalflag M. One or more inflatable buoys may be tethered to the stern, sides or anchor line of boat with signalflag M. Any boat touching these buoys will have broken rule 31 and shall act in accordance with rule 44.1.
- 9.3 Starting marks is a yellow inflated mark and the starting vessel.  
One or more inflatable buoys may be tethered to the stern, sides or anchor line of any start race committee boat. Any boat touching these buoys will have broken rule 31 and shall act in accordance with rule 44.1.
- 9.4 Finish marks will be one staff displaying a red flag and the finish race committee boat.  
One or two inflatable buoys may be tethered to the stern, sides or anchor line of any finish race committee boat. Any boat touching these buoys will have broken rule 31 and shall act in accordance with rule 44.1.

## **10 THE START**

- 10.1 Races will be started by using RRS 26.

The timing of the warning signal for those classes following the first class to start will vary by class depending on the number of boats in the start, wind conditions, the sailing characteristics of the boats racing and/or the need to adjust the starting line. The race committee will attempt to broadcast its intentions over the designated VHF channel.

- 10.2 The starting line is between a yellow inflated mark and the yellow flag on the starting vessel.  
The Starting Area will extend 50 m perpendicularly (to windward and leeward) from the starting line and radially from its ends. Boats whose preparatory signal has not been made shall stand clear of the starting area and of all boats whose preparatory signal has been made. Boats which fail to abide by these restrictions may be subject to protest by the race

committee only.

- 10.3 A boat starting later than 4 minutes after her starting signal will be scored Did Not Start without a hearing. This changes rule A4
- 10.4 If any part of a boat, crew or equipment is at the course side of the starting line within the last 2 minutes before its startsignal, the race committee can display signalflag V. It will be displayed until all boats are on the starting side of the line.  
Omissions in display of signalflag V will not be grounds for a protest or redress by a boat.
- 10.5 Individual Recalls  
The race committee will signal individual recalls according to RRS 29.1 , and will not inform the individual boats who has caused the individual recall.  
The race committee will attempt to broadcast over the appropriate VHF channel that a RRS 29.1 signal has been given .

## **11 CHANGE OF THE POSITION OF THE NEXT MARK**

- 11.1 To change the position of the next mark, the race committee will move the original mark (or the finishing line) to a new position or lay a new mark and remove the original mark as soon as practicable.
- 11.2 If signal flag R is displayed with repeated sounds near mark 1a or 2a, it means "sail directly to the finish after rounding mark 1a or 2a".

The race committee will attempt to broadcast any course changes over the appropriate VHF channel.

## **12 THE FINISH**

The finishing line is between a red flag on a staffbouy and a red flag on the finish race committee boat.

### **12.1 Retiring.**

A boat that retires from a race or does not intend to start a scheduled race shall promptly report this to the race committee on station via hailing or the designated VHF channel and receive acknowledgement. If this is not possible she shall report her actions to Race Office.

## **13 PENALTY SYSTEM**

- 13.1 Rules 44.1 and 44.2 are changed so that only one turn, including one tack and one gybe, is required.
- 13.2 RRS 44.1 is modified to allow a boat to take an Arbitration Penalty for a breach of a rule of Part 2 or RRS 31 after the incident but prior to the protest hearing by acknowledging the breach before arbitration or by accepting the opinion of the arbitrator.  
This Arbitration Penalty shall be 30 % calculated according to RRS 44.3 as the number of boats entered in the boats class and fleet (rounding 0.5 upward), but shall not be less than three places, added to her finish . However she shall not be scored worse than "Did not finish".  
The score abbreviation for a discretionary penalty imposed under this instruction will be ARB.
- 13.3 RRS 63.1 is changed to add: "An appointed arbitrator may allow the protest to be withdrawn".

## **14 TIME LIMITS**

- 14.1 Boats failing to finish within 30 minutes after the first boat in its class sails the course and finishes, will be scored Did Not Finish without a hearing. This changes rules 35 and A4 and A5.

- 14.2 Target time for the first boat to finish will be 60 minutes. Failure to meet the target time will not be grounds for redress. This changes rule 62.1(a).

## **15 PROTESTS AND REQUESTS FOR REDRESS**

- 15.1 Protest forms are available at the race office. Protests shall be returned there within the protest time limit
- 15.2 For each class, the protest time limit is 90 minutes after the last boat has finished the last race of the day. The same time limit applies to protests by the race committee and protest committee and to requests for redress. This changes rules 61.3 and 62.2.
- 15.3 Notices will be posted within 30 minutes of the protest time limit to inform competitors of hearings in which they are parties or named as witnesses. The notices will include the scheduled starting time of the hearings.  
Hearings will be held in the jury office.
- 15.4 Notices about protests from race committee or protest committee will be posted to inform the boats as required by RRS 61.1(b).
- 15.5 Breaches of instructions 7, 9.4, 17, 20, 22, 23, 24 and 25 will not be grounds for a protest by a boat. This changes rule 60.1(a). Penalties for these breaches may be less than disqualification if the protest committee so decides. The penalty is identified as DPI.
- 15.6 On the last day of the regatta a request for reopening a hearing shall be delivered
- (a) within the protest time limit if the party requesting reopening was informed of the decision on the previous day;
  - (b) no later than 30 minutes after the party requesting reopening was informed of the decision on that day.
- This changes rule 66.
- 15.7 On the last day of the regatta a request for redress based on a decision from the protest committee shall be delivered no later than 30 minutes after the decision was announced. This changes rule 62.2.

## **16 ARBITRATION**

- 16.1 For protests involving an alleged breach of a rule of Part 2 or RRS 31, a short arbitration hearing of not more than 10 minutes will be held prior to a protest hearing, unless the arbitrator deems the incident inappropriate for arbitration.  
This changes Part 5, Section B of the RRS.
- 16.2 After written protest is delivered to the Protest Desk, one representative from each boat will meet with the arbitrator unless the protestor requests that the protest be withdrawn. No witnesses will be allowed.  
Protests not resolved by arbitration will be forwarded to the Jury.
- 16.3 A boat that accepts the arbitrators opinion that she broke a rule of Part 2 or RRS 31 shall receive a penalty score of 30 % as detailed in SI 13.2.
- 16.4 The acceptance of an Arbitration Penalty cannot be grounds for redress or be appealed.
- 16.5 The arbitrator will not be a member of the Jury that hears the protest but will be permitted to observe the testimony given to the Jury and offer testimony.  
This changes rule 63.3(a).

## **16 SCORING**

- 16.1 The Low Point System of Appendix A will apply.  
Result is calculated for each of the 2 BBC-classes divided in IRC-fleet and DH-fleet.

A boats result is calculated after corrected sailing time using IRC-2012 TCC or DH-TAUD signaled in SI 8.3.

16.2 1 race is required to form a serie.

16.3 (a) When fewer than 5 races have been completed, a boat's series score will be the total of her race scores.

(b) When 5 races have been completed, a boat's series score will be the total of her race scores excluding her worst score

## **17 SAFETY REGULATIONS**

A boat that retires from a race shall notify the race committee as soon as possible and if possible display her national flag.

Danish legislation requires every boat to be equipped with personal buoyancy for the number of persons on board at any time.

## **18 REPLACEMENT OF CREW OR EQUIPMENT**

18.1 Substitution of competitors will not be allowed without prior written approval of the race committee.

18.2 Substitution of damaged or lost equipment will not be allowed unless authorized by the race committee. Requests for substitution shall be made to the committee at the first reasonable opportunity.

## **19 EQUIPMENT AND MEASUREMENT CHECKS**

A boat or equipment may be inspected at any time for compliance with the DH-2011 or IRC-2011 rules and sailing instructions. On the water, a boat can be instructed by the race committee to proceed immediately to a designated area for inspection.

## **20 ADVERTIZING**

Boats shall display advertising material as decided and delivered by organizing authority.

## **21 OFFICIAL BOATS**

The official boats will display the event burgee in yellow or green.

The starting/finish vessel will display the organizing clubs burgee (Kerteminde Sejlklub).

Protest committee boat will display a signflag J.

## **22 SUPPORT BOATS**

22.1 Team leaders, coaches and other support personnel shall stay at least 50 meters from any racing boat.

22.2 Support boats shall be registrated in bureau with information about contact phonenumber (mobile) to be used by race committee during race.

## **23 HAUL-OUT RESTRICTIONS**

Boats shall not be hauled out during the regatta from 08.00 hrs. on the first racing day until the last boat finishes the last race, except with and according to the terms of prior written permission of the race committee.

## **24 DIVING EQUIPMENT AND PLASTIC POOLS**

Underwater breathing apparatus and plastic pools or their equivalent shall not be used around the boats from 08.00 hrs. on the first racing day until the last boat finishes the last race, except with and according to the terms of prior written permission of the race committee.

## **25 RADIO COMMUNICATION**

A boat shall neither make radio transmissions while racing nor receive radio communica-

tions with race-related information not available to all boats, unless the communication is initiated by the race committee or these sailing instructions.  
This restriction of use also applies to mobile telephones.

#### 25.1 Race committee radio communication

The race committee will use the VHF Channels 72 for competitor communication.

The race committee may not respond to transmissions from competitors except to acknowledge retirements, protests, penalties reported, or requests for emergency assistance. Competitors transmissions must not interrupt or interfere with the race committees use of the competitor communication VHF channel.

Race committee broadcasts concerning its intentions, the course to be sailed, starting times, course changes, information about any signals given from race committee etc. are a courtesy only. Failure of the race committee to make a broadcast, the timing of a broadcast, or the failure of a boat to hear a broadcast shall not be grounds for redress under rule 62.1(a).

Competitor, media, support and spectator boats shall not monitor the applicable race committee internal working VHF channel, but is allowed to monitor the Race committees competitor communication VHF channel.

## 26 PRIZES

Prizes will be given to every 5 starting boats in each BBC-class and its rating division as specified in the competitor list.

Prizes will be given according to result as known at the ceremony.

## 27 DISCLAIMER OF LIABILITY

Competitors participate in the regatta entirely at their own risk. (See rule 4, Decision to Race.) The organizing authority will not accept any liability for material damage or personal injury or death sustained in conjunction with or prior to, during, or after the regatta.

## 28 INSURANCE

Each participating boat shall be insured with valid third-party liability insurance with a minimum cover of DKK 10.000.000 for persons and 2.000.000 for material damages per event or the equivalent.

***Information about insurance policy and company given at registration is the confirmation of validity of insurance as required.***

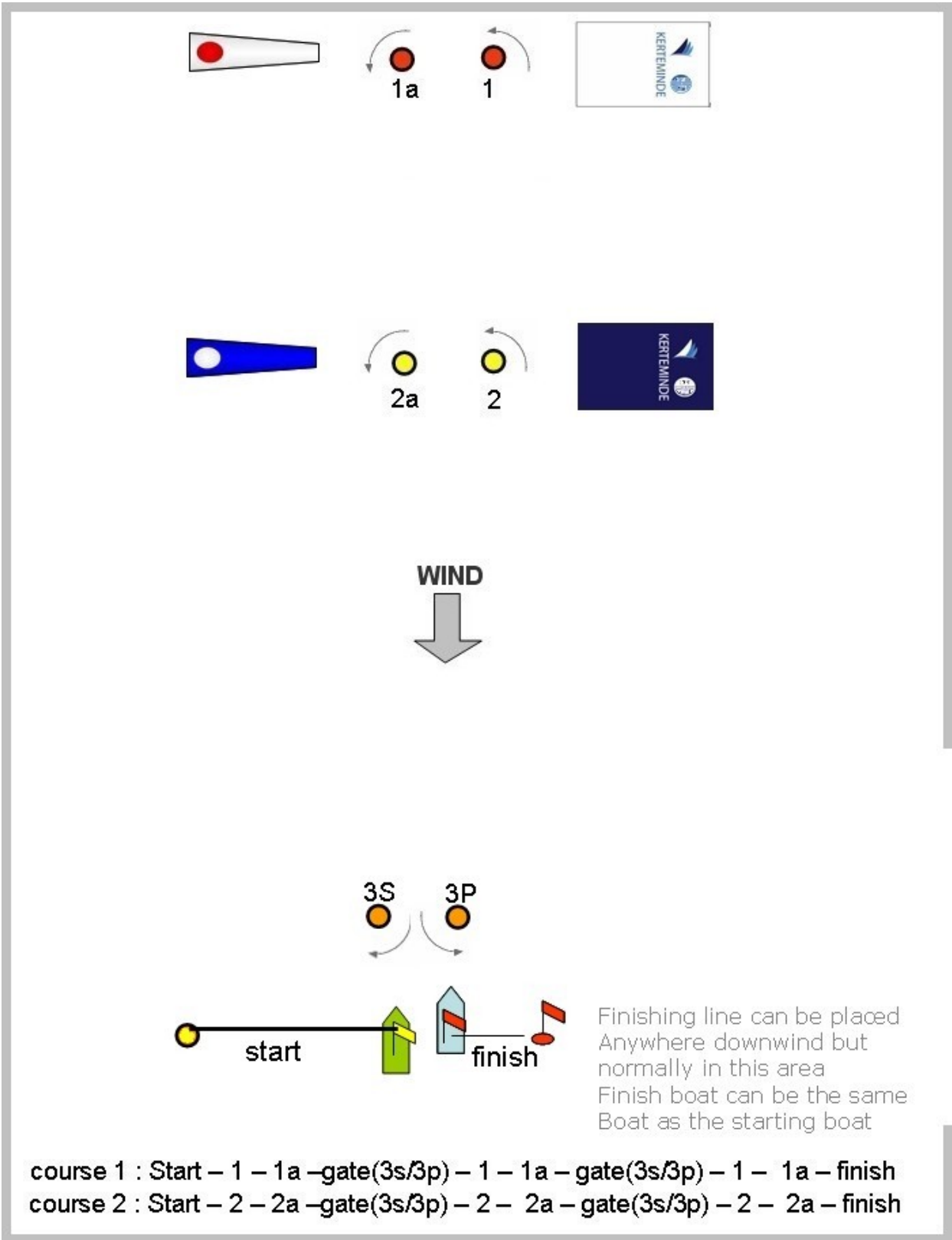
***A owner-signed accept is required if the boatowner not is onboard during race, and shall be presented at registration.***

### RACE COMMITTEE BOAT CONTACT AND DAMAGES

It is the responsibility of the owner or skipper of any race boat having contact with a Race Committee boat (tackle included) to file a report at Race Office immediately after racing.

## 29 NATIONS FLAG

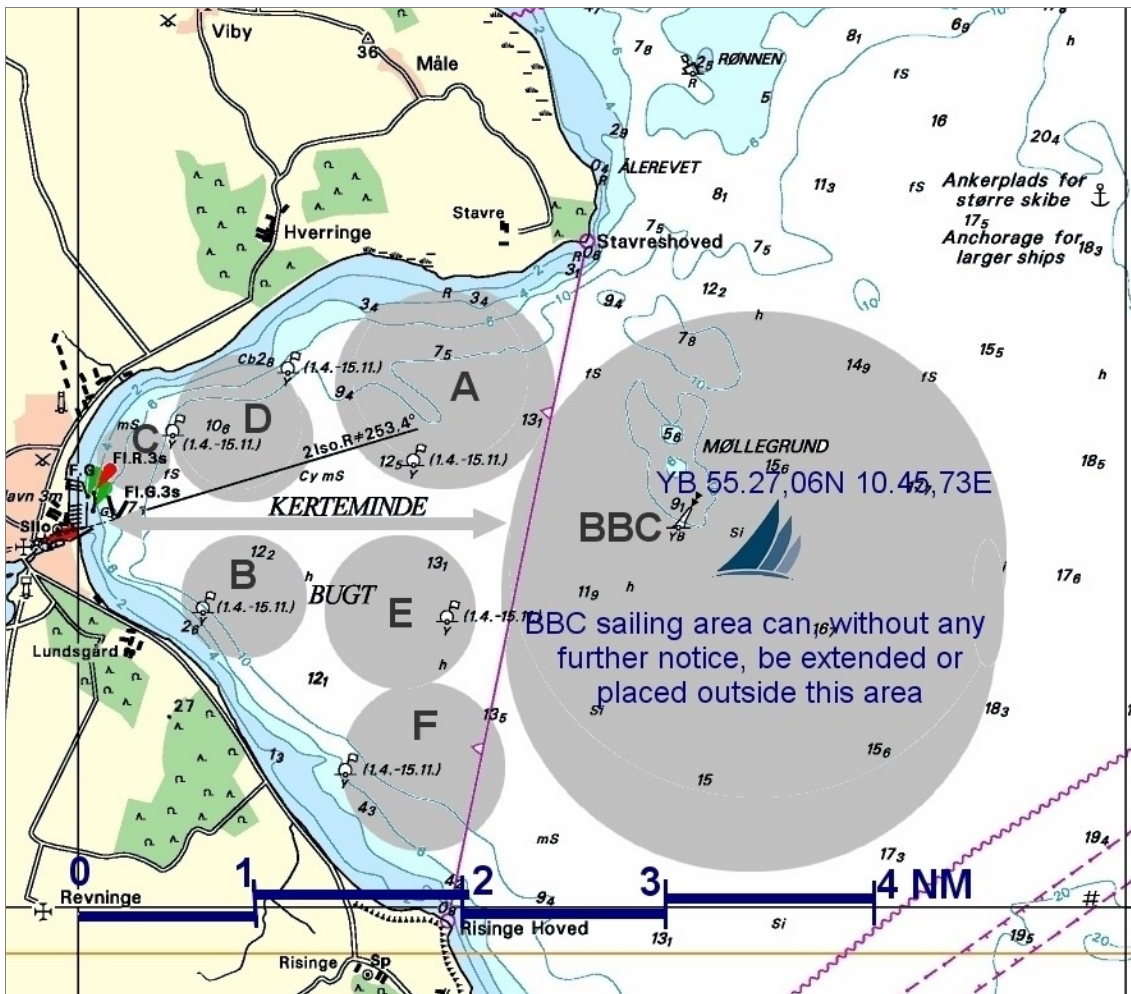
A racing boat shall not display the nation's flag.



- Marks 1 and 1a for course 1 shall be left to portside
- Marks 2 and 2a for course 2 shall be left to portside



**Race Area:**



At the same time as the "Big Boat Challenge" regatta, Kerteminde Sejlklub organizes "Sail Extreme" for young sailors and small boats. The participants in Big Boat Challenge shall use the route marked by a arrow line when sailing to and from their race area (SI-7).

Please be aware of the traffic to and from the marked course areas and be careful if dinghies is crossing the route. If possible, the SailExtreme boats will avoid crossing the route between the red and green buoys and the harbor entrance.

Pay attention to other sailing areas with reference to RRS 23.1.

Race Area	Sail Extreme	Planned Boat Classes (changes may occur without notice to BBC)
A		Optimist A
B		Optimist B + A:Silver, Feva, 405
C		Optimist C
D		29er, 49er, Formula, Hobie 16
E		Europe, Zoom 8
F		A-Cat, Contender, Yngling